

# LITEK

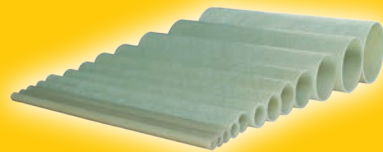
COMPOSITES CORP

WWW.FRPSUPPLY.COM

PREMIUM QUALITY

## FRP PIPE, FITTING & ACCESSORY

FOR CORROSION RESISTANT APPLICATION

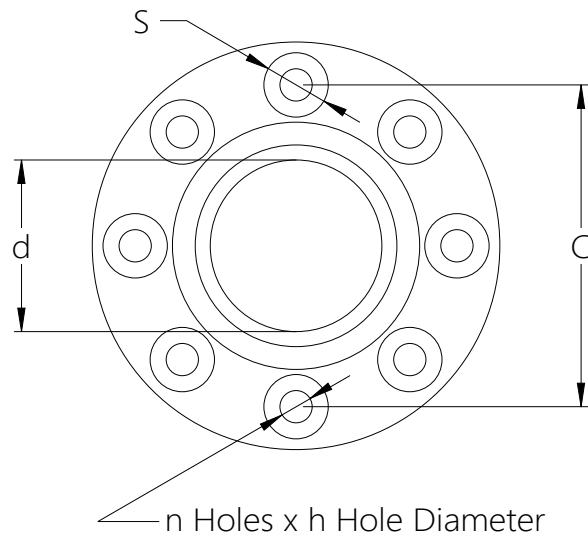
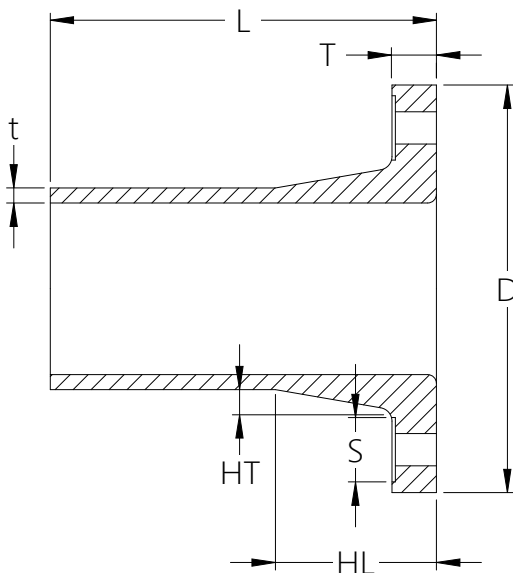
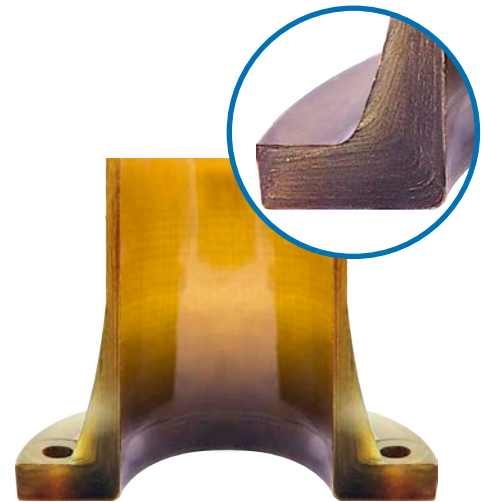
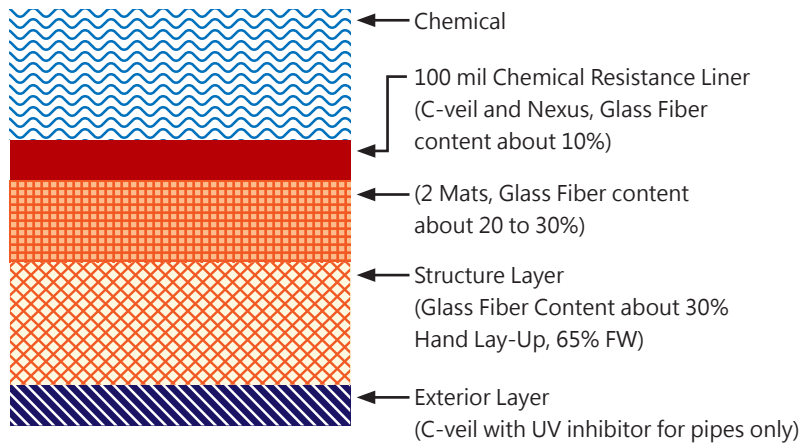


# FRP Stub Flange



- ◆ Manufactured to conform to PS 15-69 & ASTM D5421
- ◆ C-veil and Nexus + 2 Mats 100mil resin rich corrosion liner
- ◆ Hand laid, integral type construction, woven roving used continuously from flange face to hub for 3 inches size and larger
- ◆ Uniform external surface and stub end surface prepared for immediate bonding
- ◆ Bolt holes of drilled flanges are spot-faced and coated with resin
- ◆ Standard inventory available in Vinyl Ester Resin, Derakane Momentum 411-350, 470-300, 510C-350, & Hetron 922. To supply equivalent resin system can be available upon request
- ◆ MEKP (C + N Liner) & BPO (C + 2N Liner) cure systems

## Corrosion Resistance Structure Composition



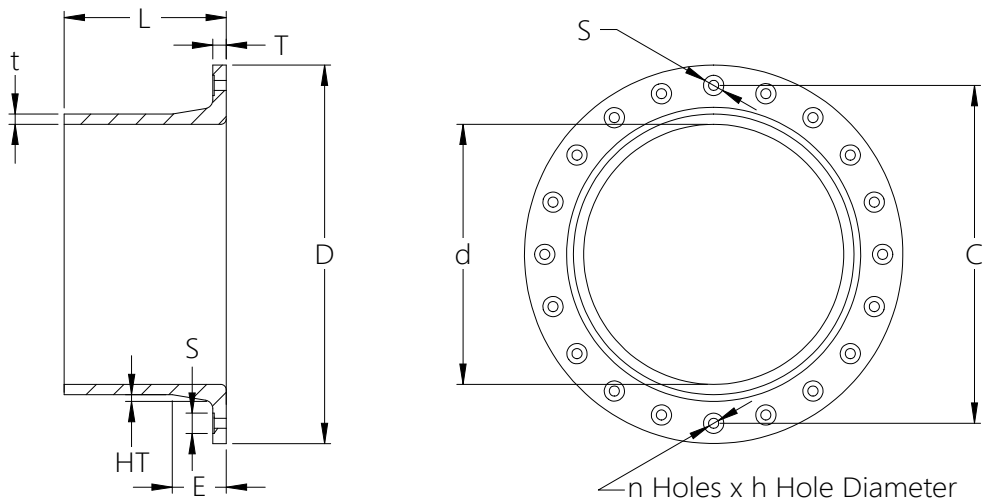
# FRP Stub Flange

Nominal Diameter (d)	Pressure Rating	Flange Diameter (D)	Flange Thickness (T)	Stub Length (L)	Stub Thickness (t)	Hub Length (HL)	Hub Thickness (HT)	No. of Holes (n)	Bolt Hole Diameter (h)	Washer Diameter (S)	Bolt Circle Diameter (C)
inch	psi	inch	inch	inch	inch	inch	inch	pcs	inch	inch	inch
1/2	150	3- 3/4	5/8	12	3/16	2- 1/2	5/16	4	5/8	1- 1/4	2- 3/8
3/4	150	4- 1/8	5/8	12	3/16	2- 1/2	5/16	4	5/8	1- 1/4	2- 3/4
1	150	4- 1/2	5/8	12	3/16	2- 1/2	5/16	4	5/8	1- 1/4	3- 1/8
1- 1/2	150	5- 1/2	11/16	12	3/16	2- 3/4	11/32	4	5/8	1- 1/4	3- 7/8
2	150	6- 1/2	11/16	12	1/4	2- 3/4	11/32	4	3/4	1- 1/2	4- 3/4
2- 1/2	150	7- 1/2	3/4	12	1/4	3	3/8	4	3/4	1- 1/2	5- 1/2
3	150	8	13/16	12	1/4	3- 1/4	13/32	4	3/4	1- 1/2	6
4	150	9- 1/2	15/16	12	1/4	3- 3/4	15/32	8	3/4	1- 1/2	7- 1/2
5	150	10- 1/2	1	12	3/8	4	1/2	8	7/8	1- 3/4	8- 1/2
6	50	11- 1/2	5/8	12	3/16	2- 1/2	5/16	8	7/8	1- 3/4	9- 1/2
	150	11- 1/2	1- 1/16	12	3/8	4- 1/4	17/32	8	7/8	1- 3/4	9- 1/2
8	50	14	3/4	12	1/4	3	3/8	8	7/8	1- 3/4	11- 3/4
	150	14	1- 1/4	12	7/16	5	5/8	8	7/8	1- 3/4	11- 3/4
10	50	16- 1/2	7/8	12	1/4	3- 1/2	7/16	12	1	2	14- 1/4
	150	16- 1/2	1- 7/16	12	1/2	5- 3/4	23/32	12	1	2	14- 1/4
12	50	19- 1/2	1	12	1/4	4	1/2	12	1	2	17
	150	19- 1/2	1- 3/4	12	5/8	7	7/8	12	1	2	17
14	50	21- 1/2	1- 1/16	12	5/16	4- 1/4	17/32	12	1- 1/8	2- 1/4	18- 3/4
	150	21- 1/2	1- 7/8	12	3/4	7- 1/2	15/16	12	1- 1/8	2- 1/4	18- 3/4
16	50	24	1- 3/16	12	5/16	4- 3/4	19/32	16	1- 1/8	2- 1/4	21- 1/4
	150	24	2	12	13/16	7	1	16	1- 1/8	2- 1/4	21- 1/4
18	50	25- 1/2	1- 1/4	12	3/8	5	5/8	16	1- 1/4	2- 1/2	22- 3/4
	150	25- 1/2	2- 1/4	12	7/8	7- 7/8	1- 1/8	16	1- 1/4	2- 1/2	22- 3/4
20	50	28	1- 5/16	12	3/8	5- 1/4	21/32	20	1- 1/4	2- 1/2	25
	150	28	2- 7/16	12	15/16	7- 5/16	1- 7/32	20	1- 1/4	2- 1/2	25
24	50	32- 1/2	1- 1/2	12	7/16	6	3/4	20	1- 3/8	2- 3/4	29- 1/2
	150	32- 1/2	2- 13/16	12	1- 1/8	8- 7/16	1- 13/32	20	1- 3/8	2- 3/4	29- 1/2
30	50	39- 1/4	1- 7/8	12	1/2	7- 1/2	15/16	28	1- 3/8	2- 3/4	36
	150	39- 1/4	3	12	1- 3/8	7- 1/2	1- 1/2	28	1- 3/8	2- 3/4	36
36	50	46	2	12	5/8	8	1	32	1- 5/8	3- 1/4	42- 3/4
	150	46	3- 1/2	12	1- 5/8	8- 3/4	1- 3/4	32	1- 5/8	3- 1/4	42- 3/4

# FRP Manway



- ◆ Manufactured to conform to PS 15-69 & ASTM D5421
- ◆ C-veil and Nexus + 2 Mats 100mil resin rich corrosion liner
- ◆ Hand laid, integral type construction, woven roving used continuously from flange face to hub for reinforcement
- ◆ Uniform external surface and stub end surface prepared for immediate bonding
- ◆ Bolt holes of drilled flanges are spot-faced and coated with resin
- ◆ Standard inventory available in Vinyl Ester Resin, Derakane Momentum 411-350, 470-300, 510C-350, & Hetron 922. To supply equivalent resin system can be available upon request
- ◆ MEKP (C + N Liner) & BPO (C + 2N Liner) cure systems

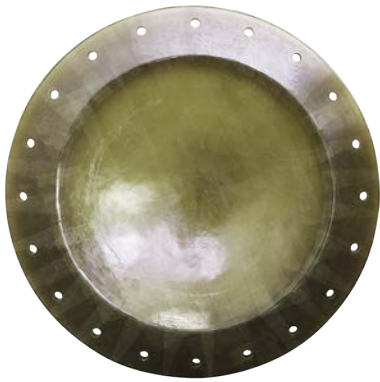


FRP PIPING

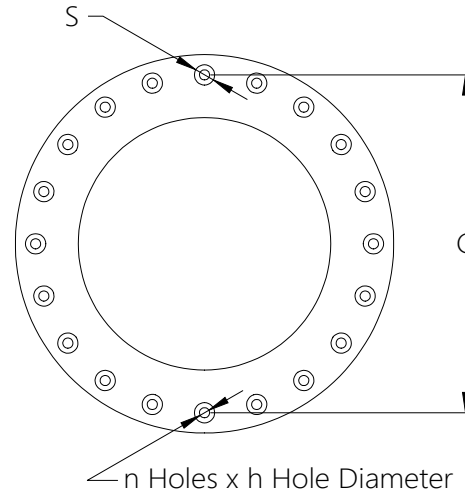
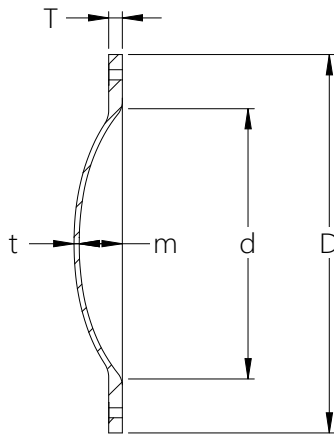
ACCESSORY

Nominal Diameter (d)	Pressure Rating	Flange Diameter (D)	Flange Thickness (T)	Stub Length (L)	Stub Thickness (t)	Hub Length (E)	Hub Thickness (HT)	No. of Holes (n)	Bolt Hole Diameter (h)	Washer Diameter (S)	Bolt Circle Diameter (C)
inch	psi	inch	inch	inch	inch	inch	inch	pcs	inch	inch	inch
20	15 (RTP-1, 10)	28	3/4	12	1/4	3	3/8	20	3/4	1- 1/2	25
	25 (RTP-1, 15)	28	1	12	3/8	4	1/2	20	3/4	1- 1/2	25
24	ATM (RTP-1, 0.5)	32- 1/2	3/8	12	1/4	1- 1/2	3/16	20	1/2	1	29- 1/2
	15 (RTP-1, 10)	32- 1/2	3/4	12	1/4	3	3/8	20	3/4	1- 1/2	29- 1/2
	25 (RTP-1, 15)	32- 1/2	1- 1/4	12	3/8	5	5/8	20	3/4	1- 1/2	29- 1/2
30	25	39- 1/4	1- 3/8	12	3/8	5- 1/2	11/16	28	3/4	1- 1/2	36
36	25	46	1- 3/4	12	3/8	7	7/8	32	3/4	1- 1/2	42- 3/4

# FRP Manway Cover



- ◆ Manufactured to conform to PS 15-69 & ASTM D5421
- ◆ C-veil and Nexus + 2 Mats 100mil resin rich corrosion liner
- ◆ Hand laid, integral type construction, woven roving used continuously for reinforcement
- ◆ Uniform external surface
- ◆ Bolt holes of drilled flanges are spot-faced and coated with resin
- ◆ Standard inventory available in Vinyl Ester Resin, Derakane Momentum 411-350, 470-300, 510C-350, & Hetron 922. To supply equivalent resin system can be available upon request
- ◆ MEKP (C + N Liner) & BPO (C + 2N Liner) cure systems



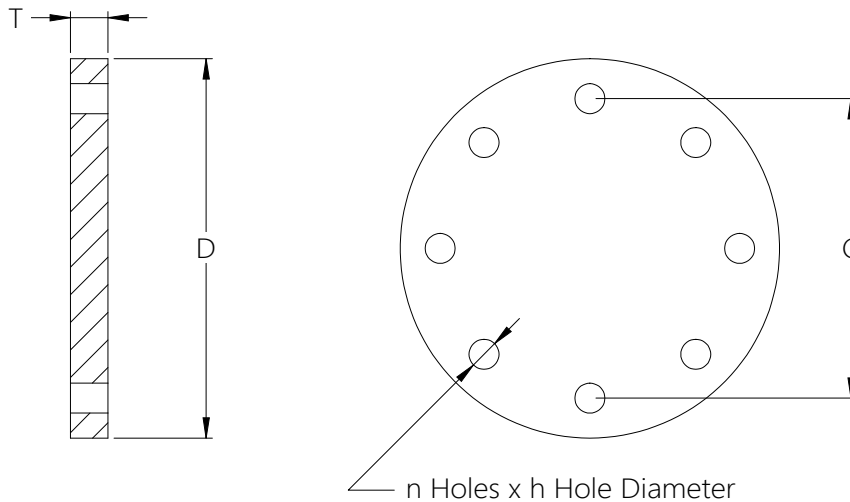
Nominal Diameter (d)	Pressure Rating	Cover Diameter (D)	Cover Thickness (T)	Cover Thickness (t)	Cover in Height (m)	No. of Holes (n)	Bolt Hole Diameter (h)	Washer Diameter (S)	Bolt Circle Diameter (C)
inch	psi	inch	inch	inch	inch	pcs	inch	inch	inch
20	15 (RTP-1, 10)	28	3/4	1/4	3- 3/16	20	3/4	1- 1/2	25
	25 (RTP-1, 15)	28	1	3/8	3- 3/16	20	3/4	1- 1/2	25
24	ATM (RTP-1, 0.5)	32- 1/2	3/8	1/4	3- 3/16	20	1/2	1	29- 1/2
	15 (RTP-1, 10)	32- 1/2	3/4	1/4	3- 3/16	20	3/4	1- 1/2	29- 1/2
	25 (RTP-1, 15)	32- 1/2	1- 1/4	3/8	3- 3/16	20	3/4	1- 1/2	29- 1/2
30	25	39- 1/4	1- 3/8	3/8	3- 3/16	28	3/4	1- 1/2	36
36	25	46	1- 3/4	3/8	3- 3/16	32	3/4	1- 1/2	42- 3/4

FRP PIPING  
ACCESSORY

# FRP Blind Flange



- ◆ Manufactured to conform to PS 15-69 & ASTM D5421
- ◆ C-veil and Nexus + 2 Mats 100mil resin rich corrosion liner
- ◆ Hand laid, integral type construction, Woven roving used continuously for 3 inches size and larger
- ◆ Uniform external surface
- ◆ Bolt holes of drilled flanges are coated with resin
- ◆ Standard inventory available in Vinyl Ester Resin, Derakane Momentum 411-350, 470-300, 510C-350, & Hetron 922. To supply equivalent resin system can be available upon request
- ◆ MEKP (C + N Liner) & BPO (C + 2N Liner) cure systems



FRP PIPING

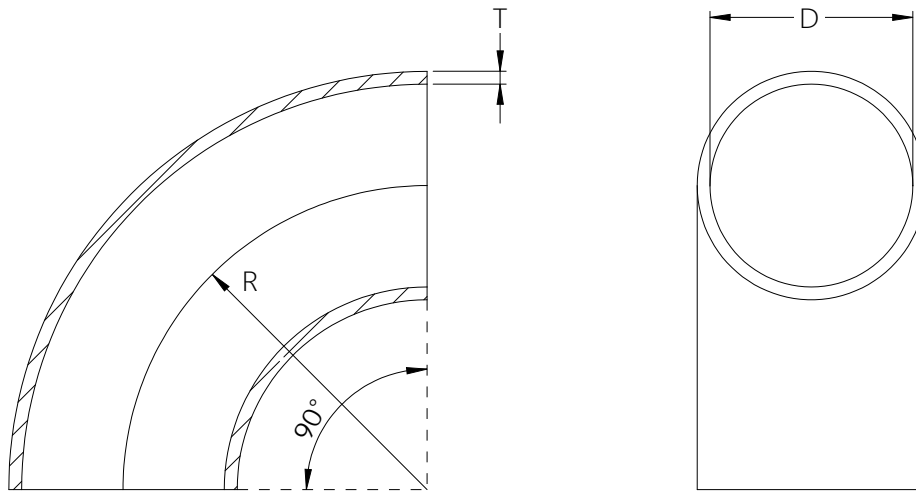
ACCESSORY

Nominal Diameter	Pressure Rating	Flange Diameter (D)	Flange Thickness (T)	No. of Holes (n)	Bolt Hole Diameter (h)	Bolt Circle Diameter (C)
inch	psi	inch	inch	pcs	inch	inch
1	150	4- 1/2	5/8	4	5/8	3- 1/8
1- 1/2	150	5- 1/2	11/16	4	5/8	3- 7/8
2	150	6- 1/2	11/16	4	3/4	4- 3/4
2- 1/2	150	7- 1/2	3/4	4	3/4	5- 1/2
3	150	8	13/16	4	3/4	6
4	150	9- 1/2	15/16	8	3/4	7- 1/2
5	150	10- 1/2	1	8	7/8	8- 1/2
6	150	11- 1/2	1- 1/16	8	7/8	9- 1/2
8	150	14	1- 1/4	8	7/8	11- 3/4
10	150	16- 1/2	1- 7/16	12	1	14- 1/4
12	150	19- 1/2	1- 3/4	12	1	17
14	150	21- 1/2	1- 7/8	12	1- 1/8	18- 3/4
16	150	24	2	16	1- 1/8	21- 1/4
18	150	25- 1/2	2- 1/4	16	1- 1/4	22- 3/4
20	150	28	2- 7/16	20	1- 1/4	25
24	150	32- 1/2	2- 13/16	20	1- 3/8	29- 1/2
30	150	39- 1/4	3	28	1- 3/8	36
36	150	46	3- 1/2	32	1- 5/8	42- 3/4

# FRP 90 Degree Elbow



- ◆ Manufactured to conform to PS 15-69 & ASTM D6041
- ◆ C-veil and Nexus + 2 Mats 100mil resin rich corrosion liner
- ◆ 90° Elbow radius equals to 2 times of the Inside Diameter for sizes not larger than 3 inches, and 1.5 times of the Inside Diameter for sizes for 4 inches and larger
- ◆ Hand laid one piece construction
- ◆ Standard inventory available in Vinyl Ester Resin, Derakane Momentum 411-350, 470-300, 510C-350, & Hetron 922. To supply equivalent resin system can be available upon request
- ◆ MEKP (C + N Liner) & BPO (C + 2N Liner) cure systems

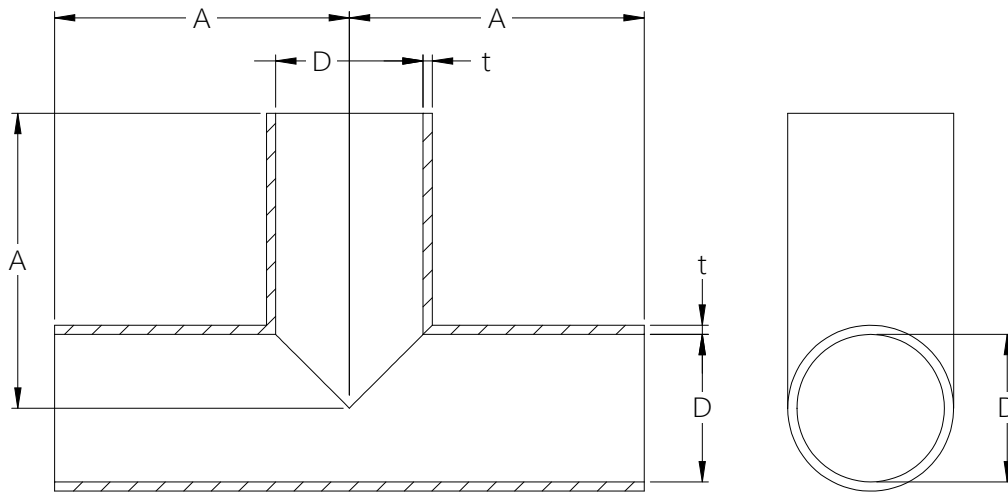


Nominal Diameter (D)	Pressure Rating	Radius (R)	Wall Thickness (T)
inch	psi	inch	inch
1	150	2	3/16
1- 1/2	150	3	3/16
2	150	4	1/4
2- 1/2	150	5	1/4
3	150	6	1/4
4	150	6	1/4
5	150	7- 1/2	3/8
6	150	9	3/8
8	150	12	7/16
10	150	15	1/2
12	150	18	5/8
14	150	21	3/4
16	150	24	13/16
18	150	27	7/8
20	150	30	15/16
24	150	36	1- 1/8
30	150	45	1- 3/8
36	150	54	1- 5/8

# FRP Equal Tee



- ◆ Manufactured to conform to PS 15-69 & ASTM D6041
- ◆ C-veil and Nexus + 2 Mats 100mil resin rich corrosion liner
- ◆ Hand laid one piece construction
- ◆ Standard inventory available in Vinyl Ester Resin, Derakane Momentum 411-350, 470-300, 510C-350, & Hetron 922. To supply equivalent resin system can be available upon request
- ◆ MEKP (C + N Liner) & BPO (C + 2N Liner) cure systems



FRP PIPING

ACCESSORY

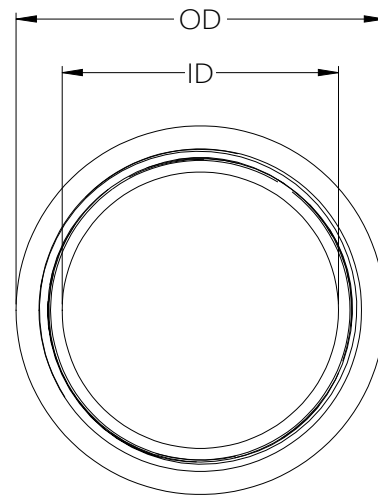
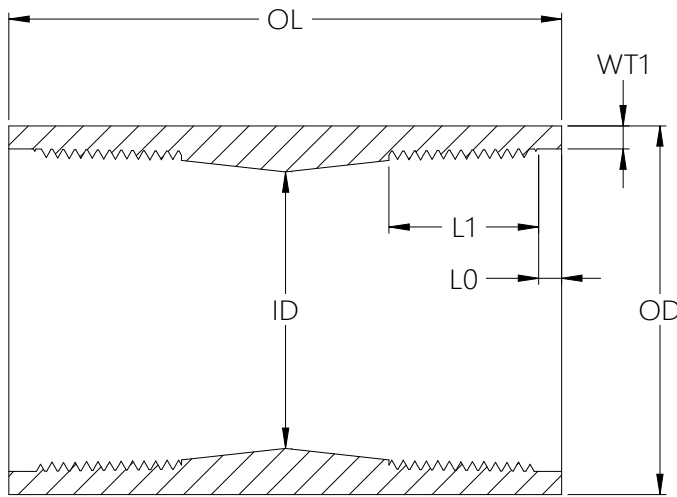
Nominal Diameter (D)	Pressure Rating	(A)	Wall Thickness (t)
inch	psi	inch	inch
1	150	4- 1/2	3/16
1- 1/2	150	5	3/16
2	150	6	1/4
2- 1/2	150	6- 1/2	1/4
3	150	7	1/4
4	150	8	1/4
5	150	9	3/8
6	150	10	3/8
8	150	12	7/16
10	150	14	1/2
12	150	16	5/8
14	150	18	3/4
16	150	20	13/16
18	150	21	7/8
20	150	22	15/16
24	150	24	1- 1/8



# FRP Coupling



- ◆ Manufactured to conform to PS15-69
- ◆ NPT Threads are Filament Wound
- ◆ C-veil and Nexus resin rich liner is built after threads for maximum Corrosion service
- ◆ Hand laid one piece construction with higher resin content (about 65%) suitable for high corrosion application
- ◆ Reinforcement is continuous throughout
- ◆ Exterior machined finish, without top coat

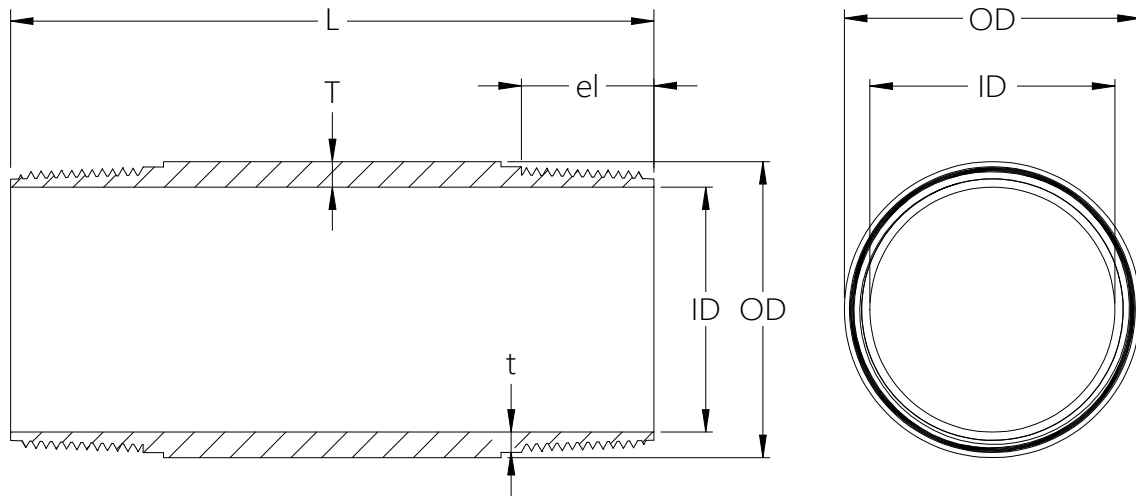


Inside Diameter (ID)	Pressure Rating	O.D. of Pipe (OD)	Wall Thickness (WT1)	Length at Beginning (L0)	Overall Length of Thread (L1)	Overall Length (OL)		
						4 inch	6 inch	8 inch
3/8	150	1- 1/16	3/16	1/8	5/8	●	●	
1/2	150	1- 1/4	3/16	3/16	7/8	●	●	
3/4	150	1- 7/16	3/16	3/16	7/8	●	●	
1	150	1- 3/4	3/16	3/16	1- 1/8	●	●	●
1- 1/4	150	2- 1/16	3/16	3/16	1- 3/16	●	●	●
1- 1/2	150	2- 5/16	3/16	3/16	1- 3/16	●	●	●
2	150	2- 7/8	1/4	3/16	1- 3/16	●	●	●
2- 1/2	150	3- 3/8	1/4	1/4	1- 9/16		●	●
3	150	4	1/4	1/4	1- 5/8		●	●
4	150	5	1/4	5/16	1- 7/8		●	●
6	150	7- 3/8	3/8	5/16	2		●	●

# FRP Nipple TBE (Thread Both Ends)



- ◆ Manufactured to conform to PS15-69
- ◆ NPT Threads
- ◆ C-veil and Nexus + 2 Mats 100mil resin rich corrosion liner
- ◆ Hand laid one piece construction; Reinforcement is continuous throughout
- ◆ Exterior machined finish, without top coat



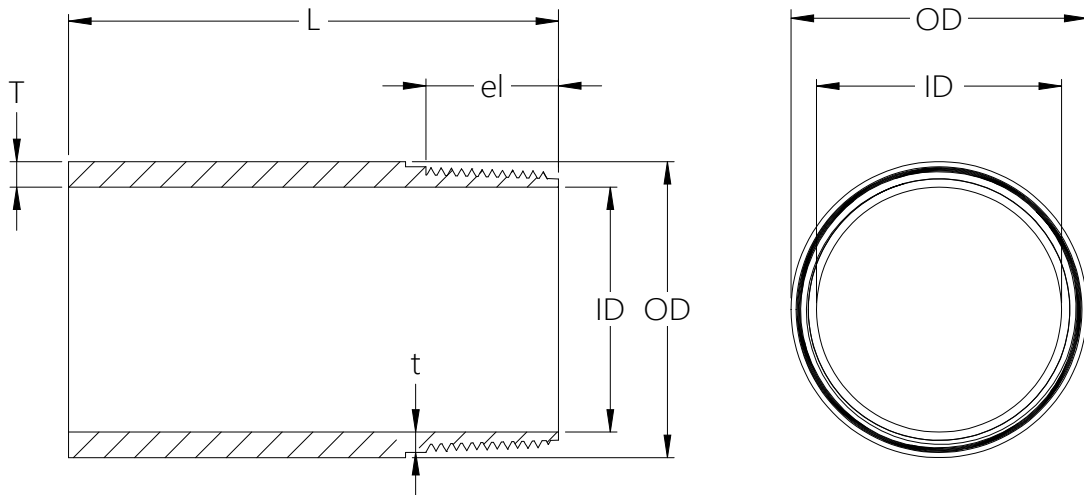
FRP PIPING

ACCESSORY

Inside Diameter (ID)	Pressure Rating	Outside Diameter (OD)	Length (L)	Wall Thickness (T)	Thread Length (el)	Wall Thickness (t)
inch	psi	inch	inch	inch	inch	inch
3/8	150	7/8	8	1/4	0.613	3/16
1/2	150	1	8	1/4	0.832	3/16
3/4	150	1- 1/4	8	1/4	0.860	3/16
1	150	1- 1/2	8	1/4	1.045	3/16
1- 1/4	150	1- 3/4	8	1/4	1.132	3/16
1- 1/2	150	2	8	1/4	1.132	3/16
2	150	2- 5/8	8	5/16	1.175	1/4

# FRP Nipple TOE (Thread One End)

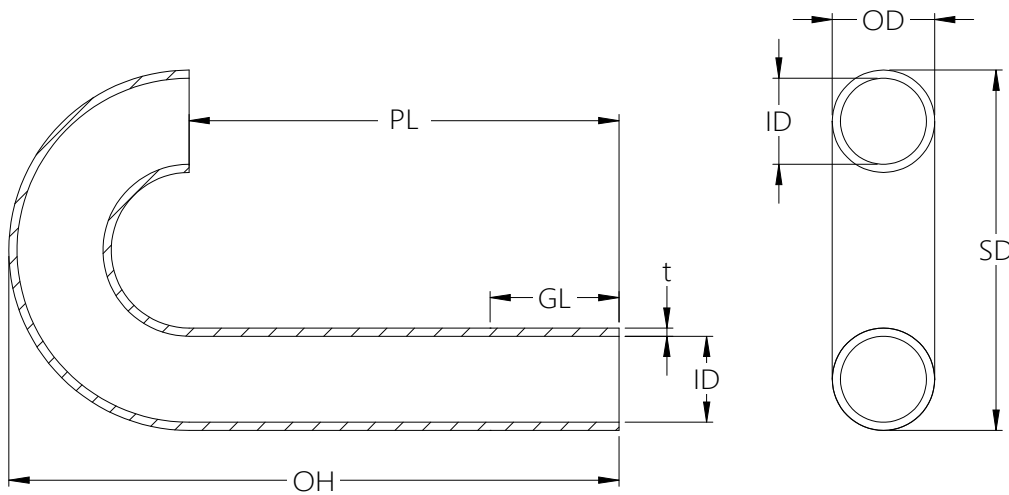
- ◆ Manufactured to conform to PS15-69
- ◆ NPT Threads
- ◆ C-veil and Nexus + 2 Mats 100mil resin rich corrosion liner
- ◆ Hand laid one piece construction; Reinforcement is continuous throughout
- ◆ Exterior machined finish, without top coat



Inside Diameter (ID)	Pressure Rating	Outside Diameter (OD)	Length (L)	Wall Thickness (T)	Thread Length (el)	Wall Thickness (t)
inch	psi	inch	inch	inch	inch	inch
2- 1/2	150	3- 1/8	6	5/16	1.571	1/4
3	150	3- 5/8	6	5/16	1.634	1/4
4	150	4- 5/8	6	5/16	1.752	1/4
6	150	6- 7/8	6	7/16	1.946	3/8

# FRP U-Vent

- ◆ Manufactured to conform to PS15-69
- ◆ C-veil and Nexus + 2 Mats 100mil resin rich corrosion liner
- ◆ Hand laid one piece construction; 90° Elbow radius equals to 1.5 times of the ID
- ◆ Standard inventory available in Vinyl Ester Resin, Derakane Momentum 411-350, 470-300, 510C-350, & Hetron 922. To supply equivalent resin system can be available upon request
- ◆ MEKP (C + N Liner) & BPO (C + 2N Liner) cure systems



FRP PIPING

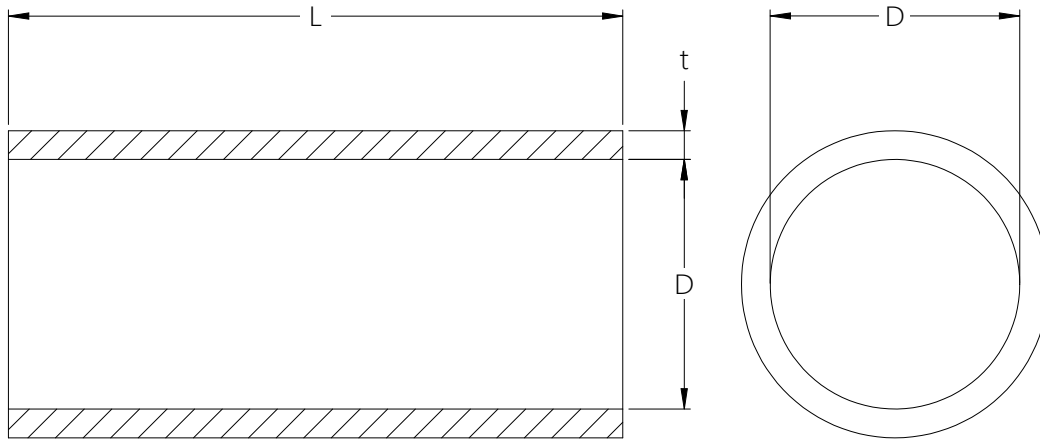
ACCESSORY

Inside Diameter (ID)	Pressure Rating	O.D. of Pipe (OD)	Wall Thickness (t)	Overall Height (OH)	Sweep Diameter (SD)	Pipe Length (PL)	Grinding Length (GL)
inch	psi	inch	inch	inch	inch	inch	inch
2	25	2- 3/8	3/16	14- 3/16	8- 3/8	10	3
3	25	3- 3/8	3/16	16- 3/16	12- 3/8	10	3
4	25	4- 3/8	3/16	18- 3/16	16- 3/8	10	3
6	25	6- 3/8	3/16	22- 3/16	24- 3/8	10	4
8	25	8- 3/8	3/16	26- 3/16	32- 3/8	10	4
10	25	10- 3/8	3/16	30- 3/16	40- 3/8	10	4
12	25	12- 3/8	3/16	34- 3/16	48- 3/8	10	4
14	25	14- 1/2	1/4	40- 1/4	56- 1/2	12	5
16	25	16- 1/2	1/4	44- 1/4	64- 1/2	12	5

# FRP Filament Wound Pipe



- ◆ Manufactured to conform to ASTM D2996
- ◆ C-veil and Nexus + 2 Mats 100mil resin rich corrosion liner
- ◆ 150psi ratings are suitable for operating temperatures to 220° F
- ◆ 54 to 56 degrees Helical Winding for maximum strength suitable for high working pressure
- ◆ C-veil + UV Inhibitor Glossy exterior finishing for extra weathering and corrosion protection



Nominal Diameter (D)	Wall Thickness (t)		Pipe Length (L)
	inch		
inch	50psi	150psi	foot
2	-	3/16	20
3	-	3/16	20
4	-	3/16	20
6	3/16	1/4	20
8	3/16	1/4	20
10	3/16	5/16	20
12	3/16	3/8	20
14	3/16	7/16	20
16	3/16	7/16	20
18	3/16	1/2	20
20	3/16	1/2	20
24	1/4	5/8	20

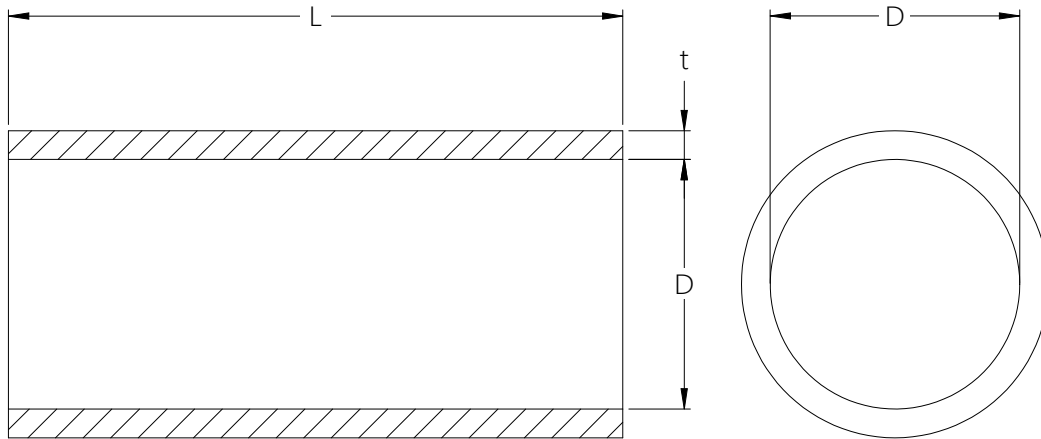
FRP PIPING

ACCESSORY

# FRP Hand Laid Pipe



- ◆ Manufactured to conform to PS 15-69 and ASTM-D6041
- ◆ C-veil and Nexus + 2 Mats 100mil resin rich corrosion liner
- ◆ 150psi ratings are suitable for operating temperatures to 220° F
- ◆ Uniform thickness and 100mil resin rich liner hand laid up suitable for high corrosion application
- ◆ C-veil + UV Inhibitor with resin (no wax) top coat for superior corrosion resistance



FRP PIPING

ACCESSORY

Nominal Diameter (D)	Wall Thickness (t)		Pipe Length (L)
	inch		foot
inch	50psi	150psi	
1	-	3/16	20
1- 1/2	-	3/16	20
2	3/16	1/4	20
3	3/16	1/4	20
4	3/16	1/4	20
6	3/16	3/8	20
8	1/4	7/16	20
10	1/4	1/2	20
12	1/4	5/8	20
14	5/16	3/4	20
16	5/16	13/16	20
18	3/8	7/8	20
20	3/8	15/16	20
24	7/16	1- 1/8	20

# Custom-Made Products



- ◆ We work for FRP fabricators as a subcontractor for full line of corrosion resistance FRP Piping Spools. If your project requires fast installation, we can subcontract pre-spooled components with butt or flange connection according to your Isometric drawings, made in China and shipped directly to your destined location to save on lead time and cost. Our US office can help to handle all shipping and importation process.
- ◆ We have been making high quality and detailed OEM FRP Products for over 30 years. Our experienced custom-made team will help you to improve cost and productivity tremendously.



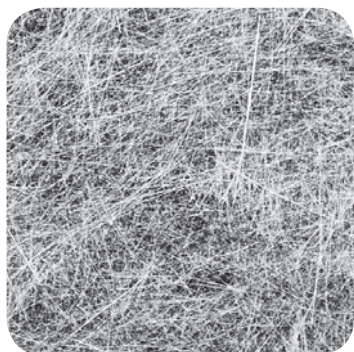
FRP PIPING

ACCESSORY

# Reinforcement

FRP PIPING

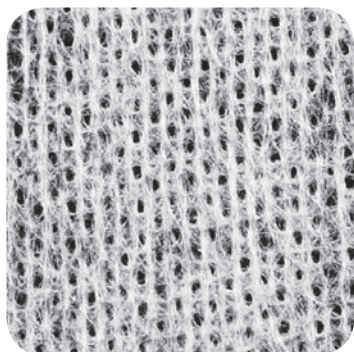
ACCESSORY



## C-veil

- ◆ Mainly used on the surface layers of FRP products
- ◆ Provides a smooth surface and quick resin soaked
- ◆ Helps improve the product surface property on corrosion resistance, compressive strength, seepage resistance and exhibits a long surface life

Area Weight		Width	Pre-cut Length (yard)			Roll Length (yard)
30 g/m <sup>2</sup>	0.9 oz/yd <sup>2</sup>	39"	5	10	20	565



## Nexus

- ◆ Superior corrosion and stress corrosion resistance
- ◆ Winds readily with less web breakage
- ◆ Improves cyclic pressure strength of piping systems
- ◆ Superior direct and reverse impact strength
- ◆ Fast wet-out
- ◆ Designed for optimum neck-down properties
- ◆ Print blocker

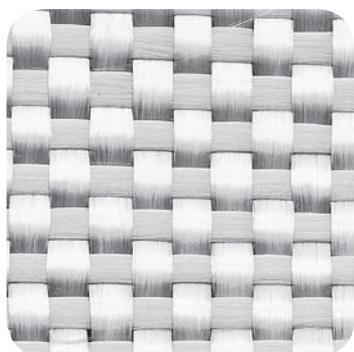
Area Weight		Width	Pre-cut Length (yard)			Roll Length (yard)
37 g/m <sup>2</sup>	1.1 oz/yd <sup>2</sup>	57"	5	10	20	500



## Chopped Strand Mat

- ◆ Quick wetting and rapid air release
- ◆ Ease of handling and ability for complex molds
- ◆ Lloyd's Register for Marine application
- ◆ Superior corrosion resistance

Area Weight		Width	Pre-cut Length (yard)			Roll Length (yard)
300 g/m <sup>2</sup>	1 oz/ft <sup>2</sup>	38"	5	10	20	148
450 g/m <sup>2</sup>	1.5 oz/ft <sup>2</sup>					115



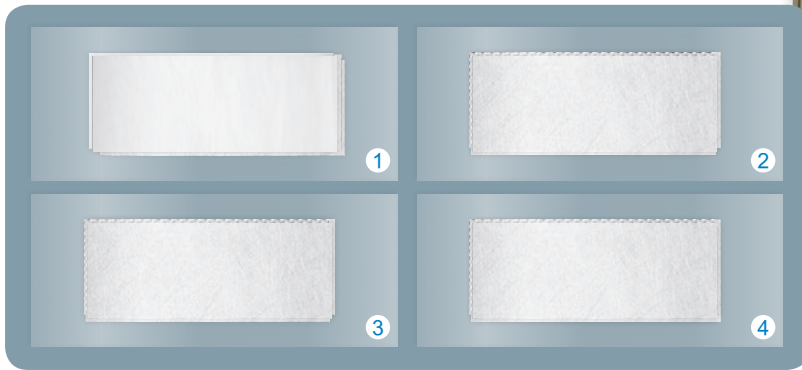
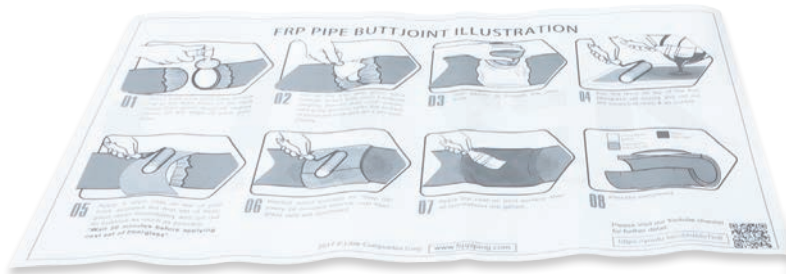
## Woven Roving

- ◆ Compatible with most resin systems
- ◆ To increase the flexural and impact strength of laminates
- ◆ For multi-layer hand lay-up applications
- ◆ Good drapeability, wet out and cost effective

Area Weight		Width	Pre-cut Length (yard)			Roll Length (yard)
600 g/m <sup>2</sup>	18 oz/yd <sup>2</sup>	38"	5	10	20	70
800 g/m <sup>2</sup>	24 oz/yd <sup>2</sup>					49



# FRP Pipe Butt Joint Fiberglass Kit



FRP PIPING

ACCESSORY

## Product Description

FRP Butt Joint Fiberglass Kit is a package of fiberglass strips precut for FRP technician on the field or shop as ready use Fiberglass reinforcement to fabricate Butt Joint FRP Pipes and Fittings lamination without going through time consumed preparation of cutting different types and sizes of Fiberglass material.

The specifications meet PS 15-69 "Custom Contact-Molded Reinforced Polyester Chemical-Resistant Process Equipment" minimum total width. It is for customer's option to select suitable pressure type of kits for joining both FRP Hand-Lay and FW piping system.

All fiberglass materials are the highest quality commercial grade meet FRP industry and Marine standard. It can work with almost all types of Unsaturated Polyester and Epoxy resin.

## Package Includes

- ♦ Fiberglass layer sets.
- ♦ A pack of Silica powder.
- ♦ Installation guide/ Data sheet.
- ♦ Desiccant.



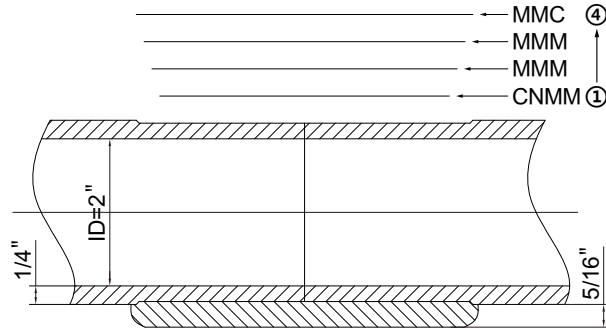
FRP Butt Joint Kit Lamination Tutorial

## FRP Pipe Butt Joint Lay-Up Sequence & Dimension Table

Diameter	Pressure Rate	Product Thickness	Joint Thickness	Interior Width (C+N+2M)	Structural Width	Structural Width (C)	Exterior Width (Each end)	Length	Lamination Layer C=C-veil, N=Nexus M=Chopped Strand Mat ( 1.5 oz / ft <sup>2</sup> ) R=Woven Roving ( 24 oz / yd <sup>2</sup> )
inch	psi	inch	inch	inch	inch	inch	inch	inch	
2	150	1/4	5/16	5	6	7	3 3/4	9 1/2	CNMM+MMM+MMM+MMC
4	150	1/4	5/16	5	6	7	3 3/4	17	CNMM+MRMM+MRMMC
6	50	3/16	1/4	4	5	6	3 1/4	24	CNMM+MRMM+MMC
	150	3/8	7/16	7	8	9	4 3/4	25	CNMM+MRMM+MRMM+MRMMC
8	50	1/4	5/16	5	6	7	3 3/4	32	CNMM+MRMM+MRMMC
	150	7/16	1/2	8	9	10	5 1/4	33	CNMM+MRMM+MRMM+MRMMC+MMC
10	50	1/4	5/16	5	6	7	3 3/4	40	CNMM+MRMM+MRMMC
	150	1/2	5/8	10	11	12	6 1/4	42	CNMM+MRMM+MRMM+MRMMC+MRMMC
12	50	1/4	5/16	5	6	7	3 3/4	47	CNMM+MRMM+MRMMC
	150	5/8	11/16	11	12	13	6 3/4	50	CNMM+MRMM+MRMM+MRMMC+MRMMC

# FRP Pipe Butt Joint Fiberglass Kit

**Dia : 1-2 inch**

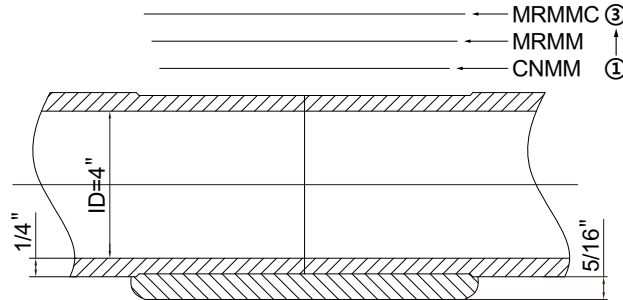


Pressure Rate : 150 psi

FRP PIPING

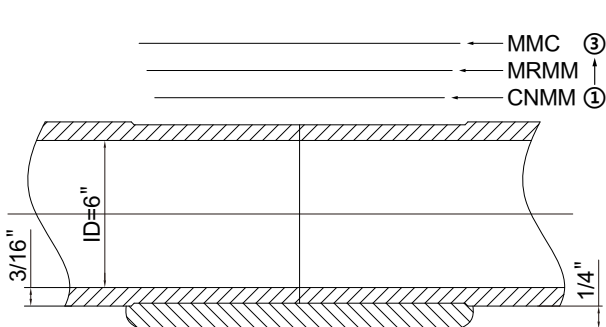
ACCESSORY

**Dia : 2.5-4 inch**

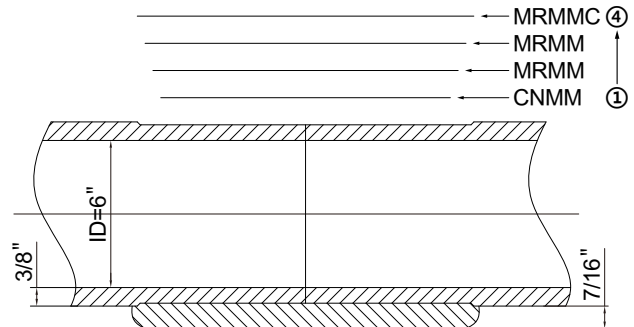


Pressure Rate : 150 psi

**Dia : 5-6 inch**



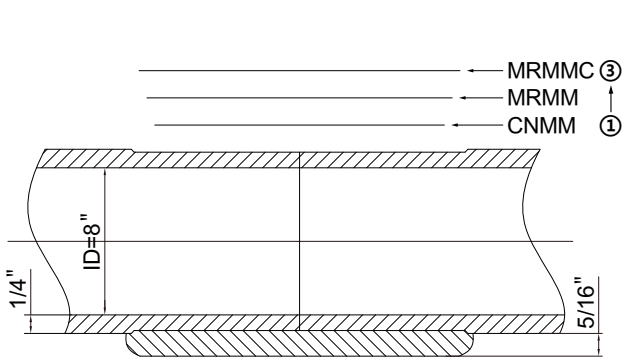
Pressure Rate : 50 psi



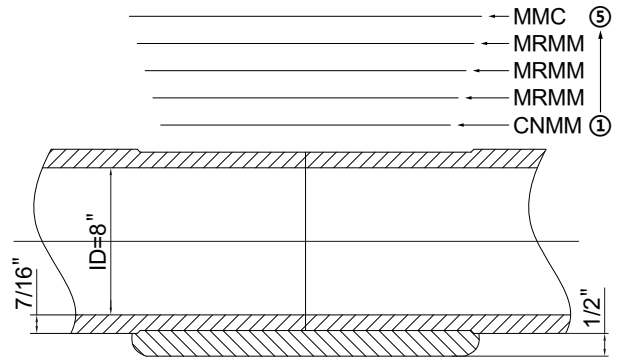
Pressure Rate : 150 psi

# FRP Pipe Butt Joint Fiberglass Kit

**Dia : 8 inch**

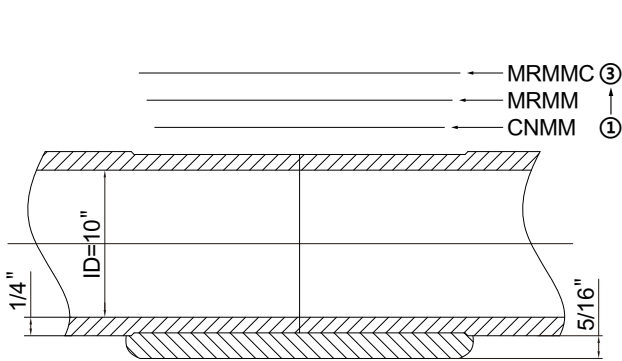


Pressure Rate : 50 psi

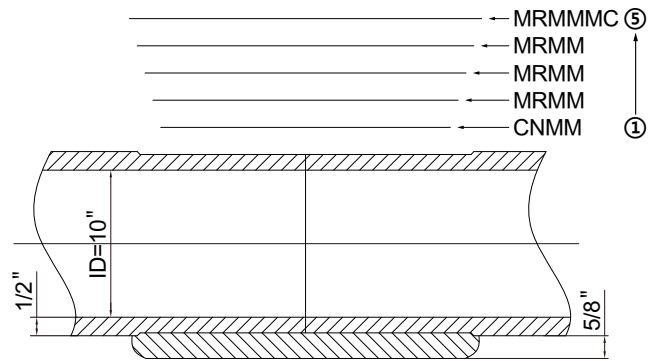


Pressure Rate : 150 psi

**Dia : 10 inch**

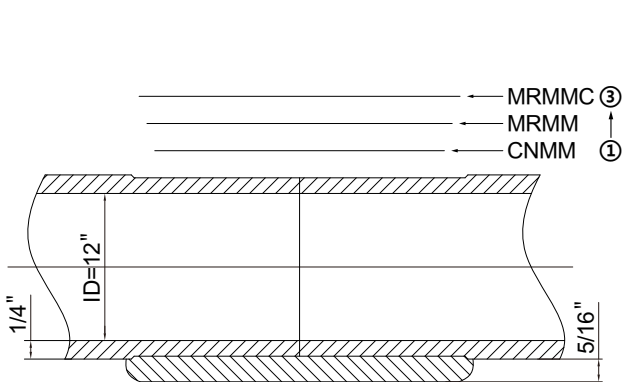


Pressure Rate : 50 psi

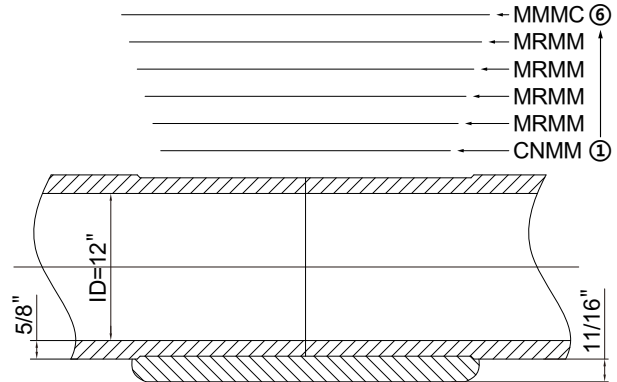


Pressure Rate : 150 psi

**Dia : 12 inch**



Pressure Rate : 50 psi



Pressure Rate : 150 psi

FRP PIPING

ACCESSORY

# Vinyl Ester Resin



FRP PIPING

ACCESSORY

## Product Description

### DERAKANE MOMENTUM 411-350

DERAKANE 411-350 epoxy vinyl ester resin is based on bisphenol-A epoxy resin and has become the "industry standard" due to its wide range of end-use applications and ability to be used in a wide range of fabrication techniques. The raw materials used in the manufacture of this resin are listed as acceptable in FDA regulation Title 21 CFR 177.2420 for repeated use in contact with food, subject to user's compliance with the prescribed limitations of that regulation.

## Applications And Use

- ◆ DERAKANE 411-350 resin is designed for use in fabricating FRP storage tanks, vessels, ducts and on-site maintenance projects, particularly in chemical processing and pulp and paper operations.
- ◆ The resin is designed for ease of fabrication using hand lay-up, spray-up, filament winding, compression molding and resin transfer molding techniques, pultrusion and molded grating applications.
- ◆ All resin will include hardener in package.

## MEKP Catalyst Mixing Chart

Catalyst Concentration	Resin Quantity					
	1 Quart		1 Gallon		5 Gallon	
%						
1%	10 cc	1/3 oz	40 cc	1 1/3 oz	200 cc	6 2/3 oz
1.25%	12.5 cc	2/5 oz	50 cc	1 2/3 oz	250 cc	8 1/3 oz
1.5%	15 cc	1/2 oz	60 cc	2 oz	300 cc	10 oz
2%	20 cc	2/3 oz	80c c	2 2/3 oz	400 cc	13 1/4 oz

30 drops is approximately equal to one cc; cc = cubic centimeter; oz =fluid ounce

NOTE : Using drops for catalyst measurement is only an estimate. In critical applications MEKP should be measured using cc's or fluid oz's which are volume measurements. The percentages in the chart: 1% thru 2%, are percentages of resin or gelcoat by weight. The cc and oz values in the chart have been converted from weights of MEKP to volumes of MEKP to make mixing easier.

# Hex Bolt & Nut Set

## Half Thread



## Full Thread



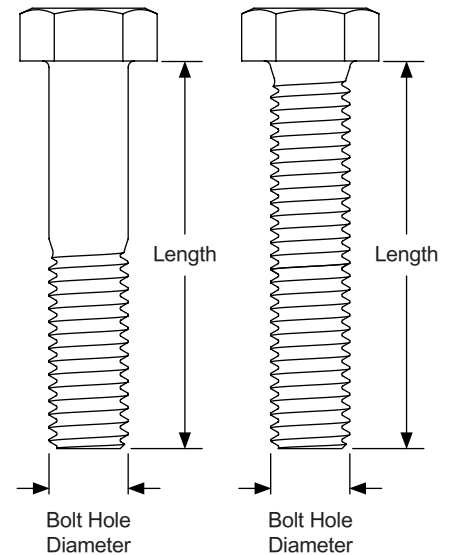
### Dimension Table

Bolt & Nut Specification				Flange & Manway Specification					
Bolt Size (inch)	Length (inch)	Half Thread	Full Thread	Nominal Diameter (inch)	Pressure Rating (psi)	Bolt Hole Diameter (inch)	Amount of Bolt Holes	Flange Thickness (inch)	Remarks
5/8	2 3/4	●		2	150	3/4	4	11/16	Flange
5/8	3	●	●	3	150	3/4	4	13/16	
5/8	3 1/4	●		4	150	3/4	8	15/16	
3/4	2 3/4	●		6	50	7/8	8	5/8	
3/4	3 1/2	●	●		150	7/8	8	1 1/16	
3/4	3	●		8	50	7/8	8	3/4	
3/4	4	●	●		150	7/8	8	1 1/4	
7/8	3 1/4	●		10	50	1	12	7/8	
7/8	4 1/2	●			150	1	12	1 7/16	
7/8	3 1/2	●		12	50	1	12	1	
7/8	5	●			150	1	12	1 3/4	
1	4	●		14	50	1 1/8	12	1 1/16	
1	5 3/4	●			150	1 1/8	12	1 7/8	
1	4 1/4	●		16	50	1 1/8	16	1 3/16	
1	6	●			150	1 1/8	16	2	
1 1/8	4 1/2	●		18	50	1 1/4	16	1 1/4	
1 1/8	6 1/2	●			150	1 1/4	16	2 1/4	
1 1/8	4 3/4	●		20	50	1 1/4	20	1 5/16	
1 1/8	7	●			150	1 1/4	20	2 7/16	
1 1/4	5 1/4	●		24	50	1 3/8	20	1 1/2	
1 1/4	8	●			150	1 3/8	20	2 13/16	
5/8	3	●	●	24	10PSI	3/4	20	3/4	Manway
3/8	1 3/4	●	●		ATM	1/2	20	3/8	
5/8	3	●	●		10PSI	3/4	20	3/4	
5/8	4	●	●		25PSI	3/4	20	1 1/4	

### Product Description

- ◆ Material Grade : Stainless steel SS316
- ◆ Dimensional standard : ASME B18.2.1

### Dimension

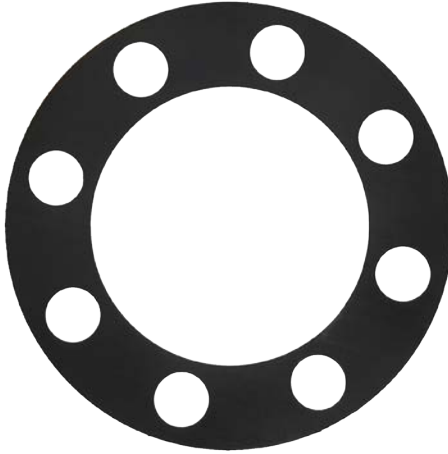


Half Thread

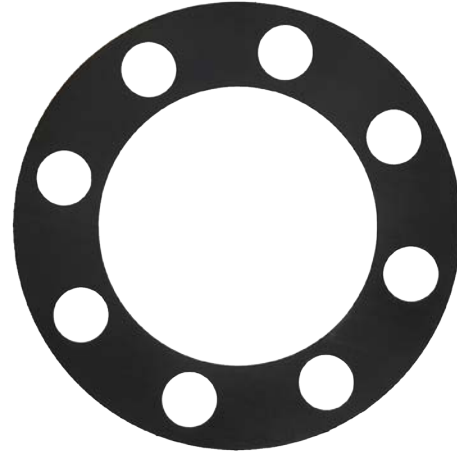
Full Thread

# Full Face Gasket Series

## EPDM Gasket



## Neoprene Gasket



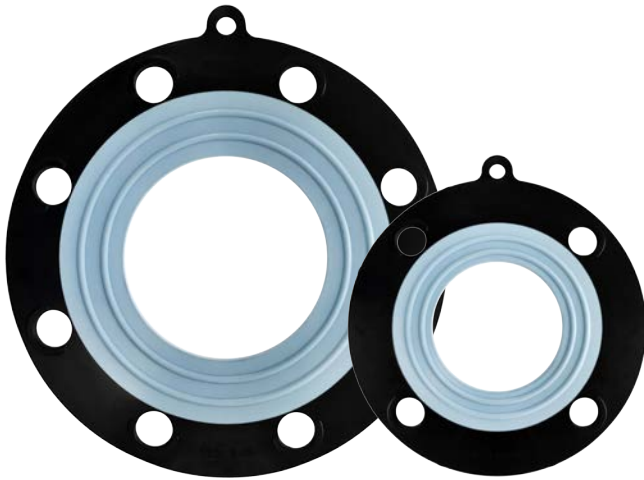
FRP PIPING

ACCESSORY

### Dimension Table

Flange Diameter	EPDM Gasket	Neoprene Gasket	Gasket Inside Diameter B (inch)	Gasket Outside Diameter D (inch)	Bolt Circle Diameter C (inch)	Gasket Thickness T (inch)	No. of Holes N (pcs)	Bolt Hole Diameter H (inch)
1	●	●	1 1/8	4 1/2	3 1/8	1/8	4	5/8
1 1/2	●	●	1 5/8	5 1/2	3 7/8	1/8	4	5/8
2	●	●	2 1/8	6 1/2	4 3/4	1/8	4	3/4
2 1/2	●	●	2 5/8	7 1/2	5 1/2	1/8	4	3/4
3	●	●	3 1/8	8	6	1/8	4	3/4
4	●	●	4 1/8	9 1/2	7 1/2	1/8	8	7/8
5	●	●	5 1/8	10 1/2	8 1/2	1/8	8	7/8
6	●	●	6 1/8	11 1/2	9 1/2	1/8	8	7/8
8	●	●	8 1/8	14	11 3/4	3/16	8	7/8
10	●	●	10 1/8	16 1/2	14 1/4	3/16	12	1
12	●	●	12 1/8	19 1/2	17	3/16	12	1
14	●	●	14 1/8	21 1/2	18 3/4	3/16	12	1 1/8
16	●	●	16 1/8	24	21 1/4	3/16	16	1 1/8
18	●	●	18 1/8	25 1/2	22 1/4	3/16	16	1 1/4
20	●	●	20 1/8	28	25	3/16	20	1 1/4
24	●	●	24 1/8	32 1/2	29 1/2	1/4	20	1 3/8
30	●	●	30 1/8	39 1/4	36	1/4	28	1 3/8
36	●	●	36 1/8	46	42 3/4	1/4	32	1 5/8

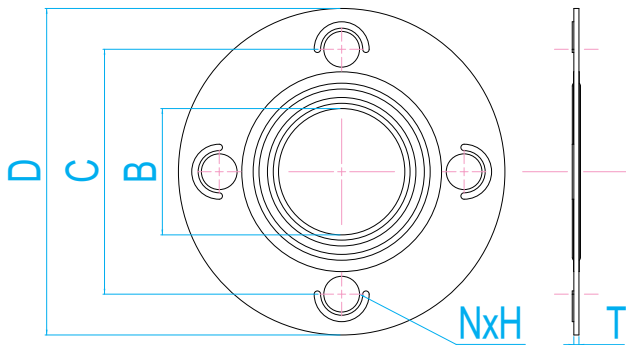
# Full Face EPDM+PTFE Gasket Series



## Product Features

- ◆ Low Bolt Torque with superior Sealing
- ◆ PTFE bonded to EPDM for high corrosion resistance
- ◆ Peroxide Cure EPDM for higher temperature resistance
- ◆ Dual, Concentric, Convex Sealing Rings
- ◆ Extra Ring Tab to assist positioning while installation

## Dimension



## Product Description

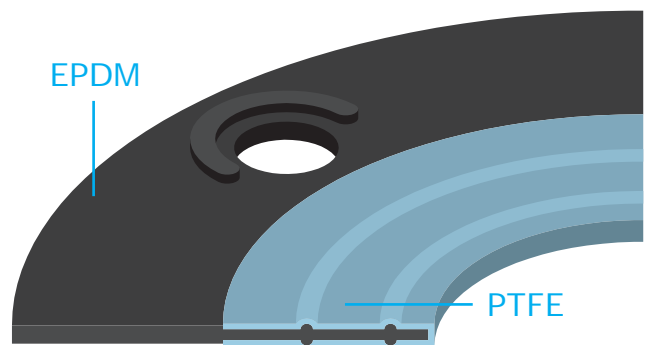
The EPDM+PTFE gaskets are manufactured with the highest quality of EPDM rubber and PTFE for maximum chemical and corrosion resistance.

The gaskets are designed with dual, concentric, convex sealing rings to aid optimum sealing at lower bolt loads. It offers superior sealing for hazard media at low bolt torque. The unique inner PTFE sealing ring provided an additional sealing safety for both gases and liquids. It is ideally suited for fiberglass, glass lined and steel full face flanges. These gaskets will virtually eliminate cracked flanges, reducing installation cost, while maintaining a high performance seal for corrosion resistance.

## Specification

- ◆ Gasket Standard: ASME B16.21 Class ASA 150
- ◆ Dimension : ANSI B16.5 drilling
- ◆ Pressure : 150 PSI Plus
- ◆ Temperature : - 22° F/-30° C to 300° F/150° C
- ◆ Color : Black (EPDM) + Blue (PTFE)
- ◆ Materials : Premium quality PTFE bonded with EPDM Rubber
- ◆ Applications : Excellent corrosion resistance to all chemicals

## Material



## Dimension Table

Flange Diameter	Gasket Inside Diameter B (inch)	Gasket Outside Diameter D (inch)	Bolt Circle Diameter C (inch)	Gasket Thickness T (inch)	No.of Holes N (pcs)	Bolt Hole Diameter H (inch)
1	1 1/8	4	3 1/8	3/16	4	5/8
2	2 3/16	5 3/4	4 3/4	3/16	4	3/4
2 1/2	2 3/4	6 3/4	5 1/2	3/16	4	3/4
3	3 3/16	7 3/8	6	3/16	4	3/4
4	4 1/16	8 3/4	7 1/2	3/16	8	3/4
6	6	10 3/4	9 1/2	3/16	8	7/8
8	7 7/8	13 1/4	11 3/4	3/16	8	7/8
10	9 7/8	15 3/4	14 1/4	1/4	12	1
12	11 7/8	18 3/4	17	1/4	12	1

## Taiwan Head Office



### **INTERLAND COMPANY, LTD.**

23F, No. 27-10, Sec. 2, Zhong Zheng E. Rd.,  
Tamsui Dist., New Taipei City 251, Taiwan  
Tel : +886 (2)8809-8355  
Fax : +886 (2)8809-8366  
E-mail : [info@interlandco.com](mailto:info@interlandco.com)  
<http://www.interlandco.com>

## U.S. Office



### **LITEK COMPOSITES CORP.**

13970 Benson Ave., Chino, CA 91710, USA  
Tel : 909-591-4977  
Fax : 909-591-4990  
E-mail : [info@litekco.com](mailto:info@litekco.com)  
<http://www.litekco.com>

## China Factory



### **LITEK COMPOSITE (XIAMEN) CO., LTD.**

No.215 Shanmei Road, Guankou, Jimei District,  
Xiamen, 361023 China  
Tel : +86 (592)531-0077  
Fax : +86 (592)531-0769  
E-mail : [info@litekco.com](mailto:info@litekco.com)  
<http://www.litekco.com>

## REMARKS

Information appearing in this literature concerning our products are based on facts and data believed to be accurate; however, it is the user's responsibility to determine the suitability for his own use of the products described herein. No guarantee, expressed or implied, is made by Litek Composites Corp.(LCC) as to the effects of such use, not does LCC assume any liability arising out of the use of the products described herein.



FRPSUPPLY.COM